

# KOYO

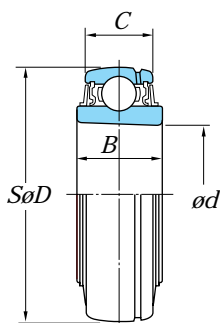
## **INSERTLAGERS**



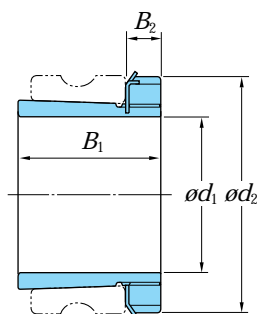
# INSERTLAGERS

## Conische boring (asborging d.m.v. trekbus)

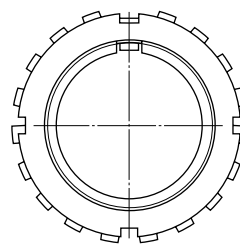
$d_1$  20 – 55 mm



UK



Trekbus

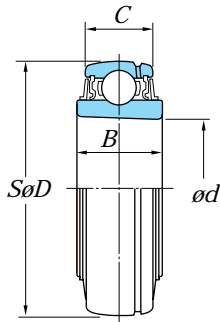


Asdiam. (mm) $d_1$	Afmetingen (mm)				Draaggetallen (kN)		Type No.	(Refer.) Gewicht (kg)	Toepasbare klembus				
	$d$	$D$	$B$	$C$	$C_r$	$C_{or}$			No.	$B_1$	$B_2$	$d_2$	Gewicht (kg)
20	25	52	21	17	14.0	7.85	UK205	0.16	H305	29	8	38	0.075
								0.27	H2305	35	8	38	0.095
	25	62	23	19	19.5	11.3	UKX05	0.27	H2305	35	8	38	0.095
	25	62	27	22	20.6	11.3	UK305	0.40	H2305	35	8	38	0.095
25	30	62	23	19	19.5	11.3	UK206	0.25	H306	31	8	45	0.11
								0.43	H2306	38	8	45	0.13
	30	72	26	20	25.7	15.4	UKX06	0.43	H2306	38	8	45	0.13
	30	72	30	24	26.7	15.0	UK306	0.47	H2306	38	8	45	0.13
30	35	72	26	20	25.7	15.4	UK207	0.37	H307	35	9	52	0.14
								0.53	H2307	43	9	52	0.17
	35	80	27	21	29.1	17.8	UKX07	0.53	H2307	43	9	52	0.17
	35	80	33	26	33.4	19.3	UK307	0.60	H2307	43	9	52	0.17
35	40	80	27	21	29.1	17.8	UK208	0.47	H308	36	10	58	0.19
								0.58	H2308	46	10	58	0.22
	40	85	29	22	32.7	20.3	UKX08	0.58	H2308	46	10	58	0.22
	40	90	35	28	40.7	24.0	UK308	0.80	H2308	46	10	58	0.22
40	45	85	29	22	32.7	20.3	UK209	0.52	H309	39	11	65	0.25
								0.67	H2309	50	11	65	0.28
	45	90	29	24	35.1	23.3	UKX09	0.67	H2309	50	11	65	0.28
	45	100	38	30	48.9	29.5	UK309	1.08	H2309	50	11	65	0.28
45	50	90	29	24	35.1	23.3	UK210	0.59	H310	42	12	70	0.30
								0.89	H2310	55	12	70	0.36
	50	100	31	25	43.4	29.4	UKX10	0.89	H2310	55	12	70	0.36
	50	110	40	32	62.0	38.3	UK310	1.38	H2310	55	12	70	0.36
50	55	100	31	25	43.4	29.4	UK211	0.80	H311	45	12	75	0.35
								1.15	H2311	59	12	75	0.42
	55	110	33	27	52.4	36.2	UKX11	1.15	H2311	59	12	75	0.42
	55	120	43	34	71.6	45.0	UK311	1.78	H2311	59	12	75	0.42
55	60	110	33	27	52.4	36.2	UK212	1.02	H312	47	13	80	0.43
								1.45	H2312	62	13	80	0.48
	60	120	36	28	57.2	40.1	UKX12	1.45	H2312	62	13	80	0.48
	60	130	47	36	81.9	52.2	UK312	2.06	H2312	62	13	80	0.48

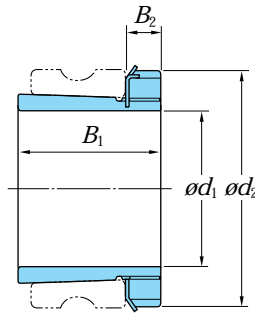
# INSERTLAGERS

## Conische boring (asborging d.m.v. trekbus)

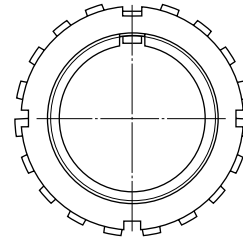
$d_1$  60 – 125 mm



UK



Trekbus



Asdiam. (mm) $d_1$	Afmetingen (mm)				Draggetallen (kN)		Type No.	(Refer.) Gewicht (kg)	Toepasbare klembus				
	$d$	$D$	$B$	$C$	$C_r$	$C_{or}$			No.	$B_1$	$B_2$	$d_2$	Gewicht (kg)
60	65	120	36	28	57.2	40.1	UK213	1.34	H313	50	14	85	0.46
	65	125	40	30	62.2	44.1	UKX13	1.62	H2313	65	14	85	0.56
	65	140	49	38	92.7	59.9	UK313	2.71	H2313	65	14	85	0.56
65	75	130	40	32	67.4	48.3	UK215	1.50	H315	55	15	98	0.83
	75	140	42	33	72.7	53.0	UKX15	2.10	H2315	73	15	98	1.05
	75	160	55	42	113	77.2	UK315	3.80	H2315	73	15	98	1.05
70	80	140	42	33	72.7	53.0	UK216	1.96	H316	59	17	105	1.05
	80	150	44	35	84.0	61.9	UKX16	2.64	H2316	78	17	105	1.3
	80	170	55	44	123	86.7	UK316	4.39	H2316	78	17	105	1.3
75	85	150	44	35	84.0	61.9	UK217	2.42	H317	63	18	110	1.2
	85	160	48	38	96.1	71.5	UKX17	3.25	H2317	82	18	110	1.45
	85	180	60	46	133	96.8	UK317	5.30	H2317	82	18	110	1.45
80	90	160	48	38	96.1	71.5	UK218	2.90	H318	65	18	120	1.4
	90	170	50	40	109	81.9	UKX18	3.80	H2318	86	18	120	1.7
	90	190	60	48	143	107	UK318	6.20	H2318	86	18	120	1.7
85	95	200	66	50	153	119	UK319	7.31	H2319	90	19	125	1.95
90	100	190	54	43	133	105	UKX20	5.36	H2320	97	20	130	2.2
	100	215	68	54	173	141	UK320	8.70	H2320	97	20	130	2.2
100	110	240	78	60	205	180	UK322	12.2	H2322	105	21	145	2.75
110	120	260	87	64	207	185	UK324	16.1	H2324	112	22	155	3.2
115	130	280	87	68	229	214	UK326	18.8	H2326	121	23	165	4.6
125	140	300	97	72	253	246	UK328	23.9	H2328	131	24	180	5.5