

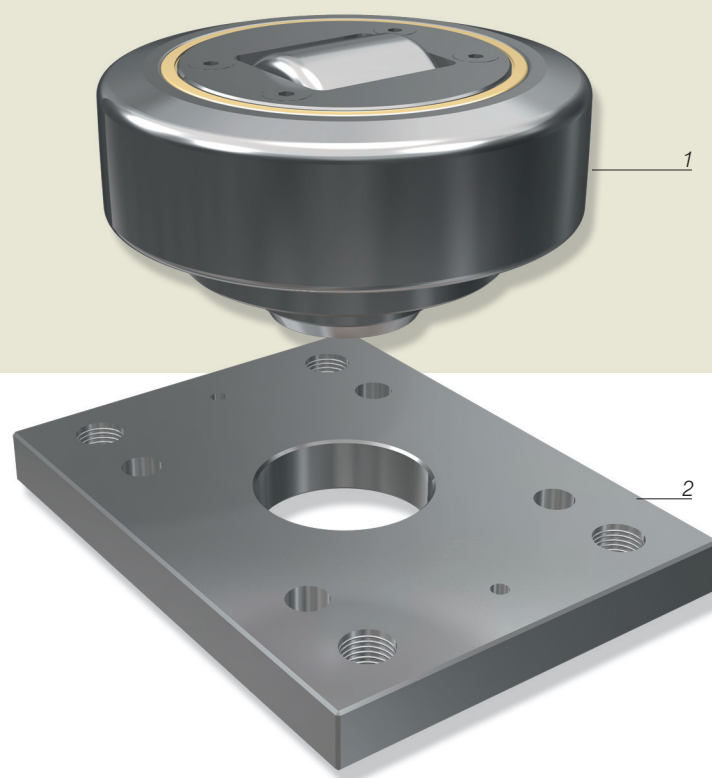
## COMBINED BEARINGS WELDED ON PLATE

---

1. *COMBINED BEARING*

2. *PLATE*

---

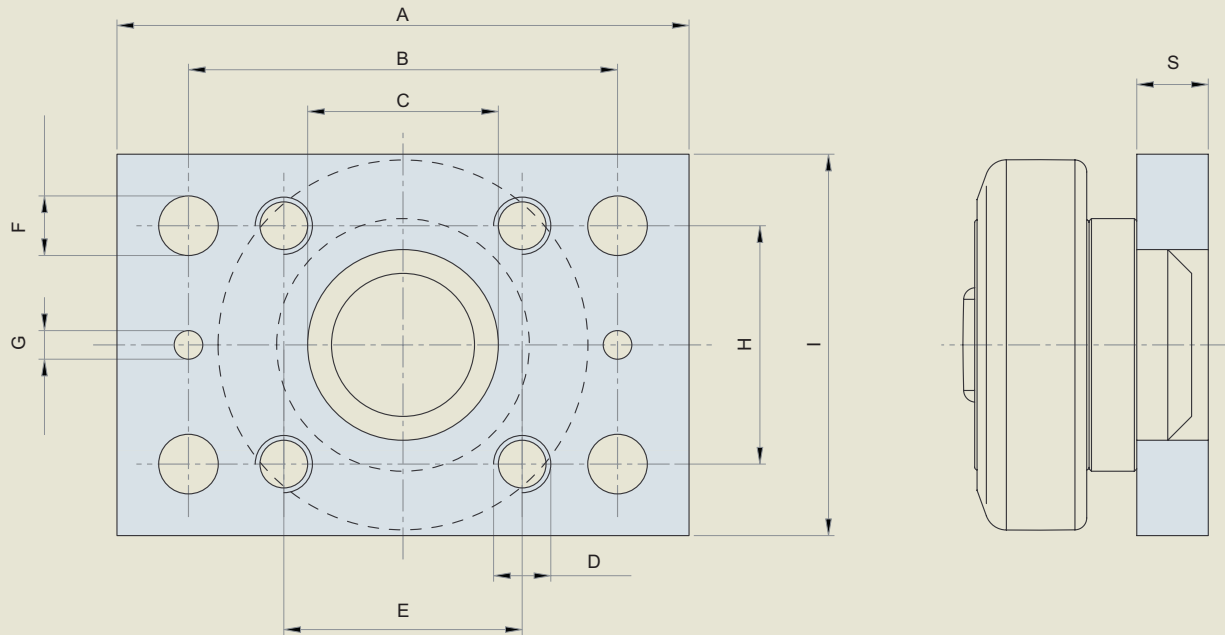


C.R. combined bearings are usually welded on plate.

This is an ideal solution because the bearing welded on plate is directly applied on the structure of the plant, with the big advantage that the assembling and disassembling operations are extremely fast and cheap.

The combined bearings on plate can be supplied in the fixed or adjustable execution.

# COMBINED BEARINGS WELDED ON PLATE



Bearing ref. + plate	Bearing ref.	Plate ref.	A mm	B mm	C mm	D mm	E mm	F mm	G mm	H mm	I mm	S mm	PROFILE
4.0631	4.0053	8.0288	90	70	30	M.8	40	8,5	6	30	50	10	EC053
4.0608	4.0054	8.0276	100	80	30	M.10	40	10,5	6	40	60	10	2890
4.0609	4.0072	8.0276	100	80	30	M.10	40	10,5	6	40	60	10	2890
4.0610	4.0055	8.0277	120	90	35	M.12	50	12,5	6	50	80	15	2867
4.0611	4.0073	8.0277	120	90	35	M.12	50	12,5	6	50	80	15	2867
* 4.0612	4.0056	8.0278	120	90	40	M.12	50	12,5	6	50	80	15	2810
4.0613	4.0074	8.0278	120	90	40	M.12	50	12,5	6	50	80	15	2810
* 4.0614	4.0058	8.0279	120	90	45	M.16	90	-	-	90	120	20	2811
4.0615	4.0076	8.0279	120	90	45	M.16	90	-	-	90	120	20	2811
* 4.0616	4.0061	8.0280	180	140	60	M.16	80	17	6	80	120	20	2862
4.0617	4.0078 / L	8.0280	180	140	60	M.16	80	17	6	80	120	20	2862
* 4.0618	4.0062	8.0280	180	140	60	M.16	80	17	6	80	120	20	2891
4.0619	4.0079	8.0280	180	140	60	M.16	80	17	6	80	120	20	2891
* 4.0620	4.0063	8.0281	200	160	60	M.16	100	17	6	100	150	20	2757
4.0621	4.0080	8.0281	200	160	60	M.16	100	17	6	100	150	20	2757
* 4.0624	4.0011	8.0281	200	160	60	M.16	100	17	6	100	150	20	2757

THE BEARINGS ARE IN ZRS EXECUTION.

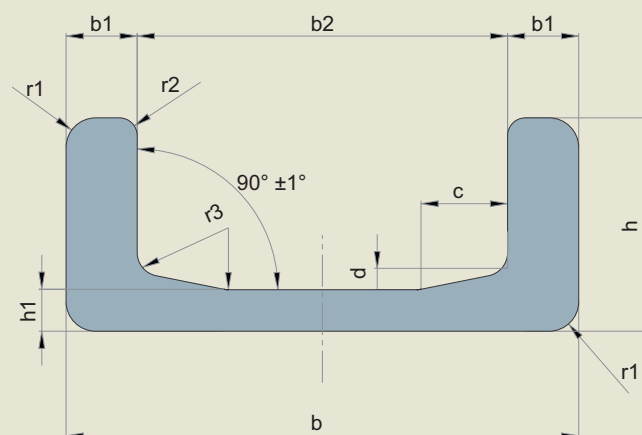
\* 4.0612-4.0614-4.0616-4.0618-4.0620-4.0624 are supplied with lubrication holes.

# “U” STANDARD LIFT GUIDES

“U” standard lift guides are used in different industrial fields: fork lift masts, food industry, car industry, ceramic industry, machine tool industry.

Normally small and medium size combined bearings are used inside these guides.

They are manufactured in ST 52.3 steel.



C.R. ref.	Dimensions													WEIGHT Wx		
	(b)	b1	Tol.	b2	Tol.	h	Tol.	h1	Tol.	c	d	r1	r2	r3	Kg/m	Cm <sup>3</sup>
EC 053	65	6	±0,5	53	±0,4	30	±0,5	6	±0,5	4	4	6	4	*	5,3	11,9
2890	86,5	12	±0,5	62,5	+1	36	±0,8	7	±0,5	15	3	≤6	2-3	4	10,5	32
2867	103,2	16,2	±0,5	70,8	±0,5	40	±0,8	7,7	±0,5	15	3	≤6	2-3	5	14,8	53
2810	121,3	21,3	±0,5	78,7	±0,5	41	±0,8	10,8	±0,5	15	5	≤6	2-3	5	20,9	81
2811	135,4	23	±0,5	89,4	±0,5	53	±0,8	12,7	±0,5	15	5	≤6	2-3	5	28,6	128
2862	157,2	24,4	±0,5	108,4	±0,5	61,2	±0,8	14	±0,5	15	5	≤6	2-3	5	35,9	190
2891	175	25,6	±0,5	123,8	±0,5	66,2	±0,8	16,2	±0,5	15	5	≤6	2-3	5	42,9	250
2757	201,5	25,7	±0,5	150,1	±0,5	71,2	±0,8	19,4	±0,5	20	5	≤8	2-3	6	52,3	340

Material: UNI Fe 510 C – DIN St 52.3

The profiles can be cut on request of the customer, maximum length is 12 m.