

KOYO

LAGERBLOKKEN

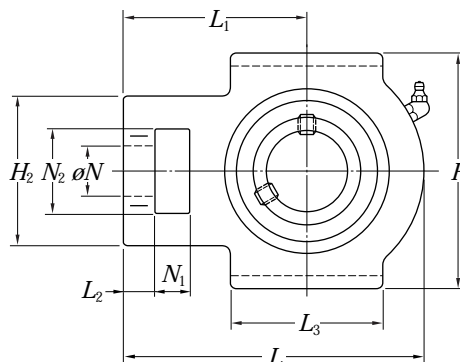
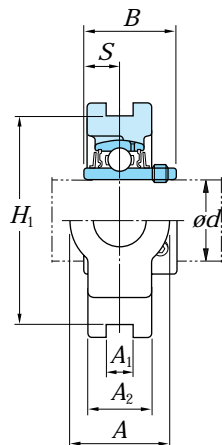


LAGERBLOKKEN

Spanblok - gietijzer

UCT (asborging d.m.v. borgschroeven)

d 12 - 30.16 mm



Asdiam. (mm)	Asdiam. (inch)	Afmetingen (mm)															Type Nr.	Huis Nr.	Toegepast lager		(Refer.) Blok Gewicht (kg)	
		A	A ₁	A ₂	H	H ₁	H ₂	L	L ₁	L ₂	L ₃	N	N ₁	N ₂	B	S			Nr.	Draaggetallen (kN) C _r C _{0r}		
12																	UCT201		UC201			
12,70	1/2																UCT201-08		UC201-08			
14,28	9/16																UCT202-09		UC202-09			
15																	UCT202		UC202			
15,87	5/8	32	12	21	89	76	51	94	61	10	51	19	16	32	31	12.7	UCT202-10	T204	UC202-10	12.8	6.65	0.81
17																	UCT203		UC203			
17,46	11/16																UCT203-11		UC203-11			
19,05	3/4																UCT204-12		UC204-12			
20																	UCT204		UC204			
20,64	13/16																UT205-13		UC205-13			
22,23	7/8																UCT205-14		UC205-14			
23,81	15/16	32	12	24	89	76	51	97	62	10	51	19	16	32	34.1	14.3	UCT205-15	T205	UC205-15	14.0	7.85	0.84
25																	UCT205		UC205			
25,40	1																UCT205-16		UC205-16			
23,81	15/16																UCTX05-15		UCX05-15			
25		37	12	28	102	89	56	113	70	10	57	22	16	37	38.1	15.9	UCTX05	TX05	UCX05	19.5	11.3	1.40
25,40	1																UCTX05-16		UCX05-16			
22,23	7/8																UCT305-14		UC305-14			
23,81	15/16	36	12	26	89	80	62	122	76	12	65	26	16	36	38	15	UCT305-15	T305	UC305-15	20.6	11.3	1.40
25																	UCT305		UC305			
25,40	1																UCT305-16		UC305-16			
26,98	1.1/16																UCT206-17		UC206-17			
28,58	1.1/18	37	12	28	102	89	56	113	70	10	57	22	16	37	38.1	15.9	UCT206-18	T206	UC206-18	19.5	11.3	1.30
30																	UCT206		UC206			
30,16	1.3/16																UCT206-19		UC206-19			

Opmerkingen 1) Toegepaste smeernippels

1/4-28UNF 201 - 210, X05 - X09, 305 - 308

PT 1/8 211 - 218, X10 - X20, 309 - 328

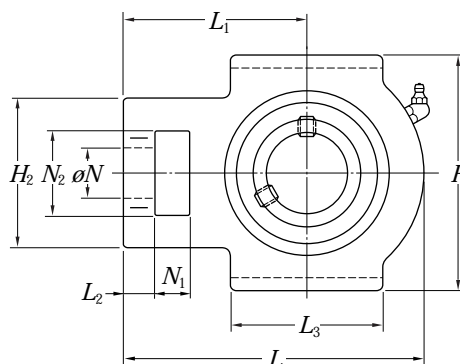
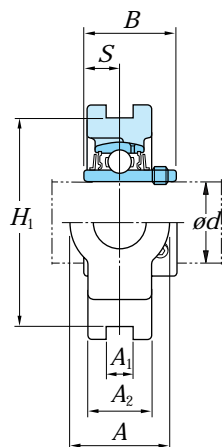
2) Lagers en blokken met dubbele- of drievoudige afdichting hebben het achtervoegsel L2 resp. L3.

LAGERBLOKKEN

Spanblok - gietijzer

UCT (asborging d.m.v. borgschroeven)

d 30 - 40 mm



Asdiam. (mm)	Asdiam. (inch)	Afmetingen (mm)															Type Nr.	Huis Nr.	Toegepast lager		(Refer.) Blok Gewicht (kg)	
		A	A ₁	A ₂	H	H ₁	H ₂	L	L ₁	L ₂	L ₃	N	N ₁	N ₂	B	S			Nr.	Draaggetallen (kN) C _r C _{0r}		
30																	UCTX06		UCX06			
30.16	1.3/16	37	12	30	102	89	64	129	78	13	64	22	16	37	42.9	17.5	UCTX06-19	TX06	UCX06-19	25.7	15.4	1.70
31.75	1.1/4																UCTX06-20		UCX06-20			
28.58	1.1/8																UCT306-18		UC306-18			
30		41	16	28	100	90	70	137	85	14	74	28	18	41	43	17	UCT306	T306	UC306	26.7	15.0	1.80
30.16	1.3/16																UCT306-19		UC306-19			
31.75	1.1/4																UCT207-20		UC207-20			
33.34	1.5/16																UCT207-21		UC207-21			
34.93	1.3/8	37	12	30	102	89	64	129	78	13	64	22	16	37	42.9	17.5	UCT207-22	T207	UC207-22	25.7	15.4	1.60
35																	UCT207		UC207			
36.51	1.7/16																UCT207-23		UC207-23			
35																	UCTX07		UCX07			
36.51	1.7/16	49	16	36	114	102	83	144	88	15	83	29	19	49	49.2	19	UCTX07-23	TX07	UCX07-23	29.1	17.8	2.70
38.10	1.1/2																UCTX07-24		UCX07-24			
31.75	1.1/4																UCT307-20		UC307-20			
33.34	1.5/16																UCT307-21		UC207-21			
34.93	1.3/8	45	16	32	111	100	75	150	94	15	80	30	20	45	48	19	UCT307-22	T307	UC307-22	33.4	19.3	2.30
35																	UCT307		UC307			
36.51	1.7/16																UCT307-23		UC207-23			
38.10	1.1/2																UCT208-24		UC208-24			
39.69	1.9/16	49	16	33	114	102	83	144	88	16	83	29	19	49	49.2	19	UCT208-25	T208	UC208-25	29.1	17.8	2.50
40																	UCT208		UC208			
38.10	1.1/2	49	16	36	117	102	83	144	87	15	83	29	19	49	49.2	19	UCTX08-24	TX08	UCX08-24	32.7	20.3	2.60
40																	UCTX08		UCX08			

Opmerkingen 1) Toegepaste smeernippels

1/4-28UNF 201 - 210, X05 - X09, 305 - 308

PT 1/8 211 - 218, X10 - X20, 309 - 328

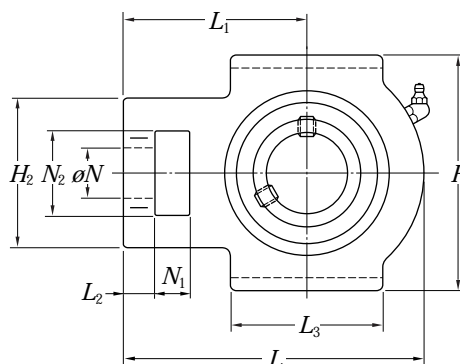
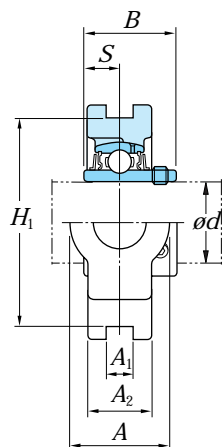
2) Lagers en blokken met dubbele- of drievoudige afdichting hebben het achtervoegsel L2 resp. L3.

LAGERBLOKKEN

Spanblok - gietijzer

UCT (asborging d.m.v. borgschroeven)

d 38.1 - 50 mm



Asdiam. (mm)	Asdiam. (inch)	Afmetingen (mm)															Type Nr.	Huis Nr.	Toegepast lager		(Refer.) Blok Gewicht (kg)	
		A	A ₁	A ₂	H	H ₁	H ₂	L	L ₁	L ₂	L ₃	N	N ₁	N ₂	B	S			Nr.	Draaggetallen (kN) C _r C _{0r}		
38.10	1.1/2																UCT308-24		UC308-24			
39.69	1.9/16	50	18	34	124	112	83	162	100	17	89	32	22	50	52	19	UCT308-25	T308	UC308-25	40.7	24.0	3.00
40																	UCT308		UC308			
41.28	1.5/8																UCT209-26		UC209-26			
42.86	1.11/16	49	16	35	117	102	83	144	87	16	83	29	19	49	49.2	19	UCT209-27	T209	UC209-27	32.7	20.3	2.40
44.45	1.3/4																UCT209-28		UC209-28			
45																	UCT209		UC209			
40																	UCTX09/1d		UCX09/1d			
42.86	1.11/16	49	16	38	117	102	83	149	90	16	86	29	19	49	51.6	19	UCTX09-27	TX09	UCX09-27	35.1	23.3	2.90
44.45	1.3/4																UCTX09-28		UCX09-28			
45																	UCTX09		UCX09			
41.28	1.5/8																UCT309-26		UC309-26			
42.86	1.11/16	55	18	38	138	125	90	178	110	18	97	34	24	55	57	22	UCT309-27	T309	UC309-27	48.9	29.5	4.10
44.45	1.3/4																UCT309-28		UC309-28			
45																	UCT309		UC309			
46.04	1.13/16																UCT210-29		UC210-29			
47.63	1.7/8	49	16	37	117	102	83	149	90	16	86	29	19	49	51.6	19	UCT210-30	T210	UC210-30	35.1	23.3	2.50
49.21	1.15/16																UCT210-31		UC210-31			
50																	UCT210		UC210			
42.86	1.15/16																UCTX10-31		UCX10-31			
50		64	22	42	146	130	102	171	106	19	95	35	25	64	55.6	22.2	UCTX10	TX10	UCX10	43.4	29.4	4.40
50.80	2																UCTX10-32		UCX10-32			
47.63	1.7/8																UCT310-30		UC310-30			
49.21	1.15/16	61	20	40	151	140	98	191	117	20	106	37	27	61	61	22	UCT310-31	T310	UC310-31	62.0	38.3	4.90
50																	UCT310		UC310			

Opmerkingen 1) Toegepaste smeernippels

1/4-28UNF 201 - 210, X05 - X09, 305 - 308

PT 1/8 211 - 218, X10 - X20, 309 - 328

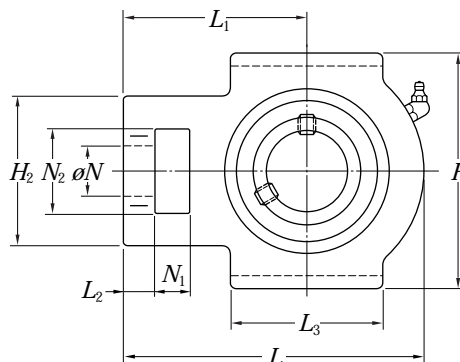
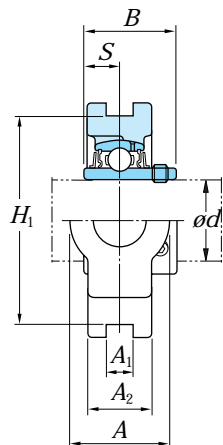
2) Lagers en blokken met dubbele- of drievoudige afdichting hebben het achtervoegsel L2 resp. L3.

LAGERBLOKKEN

Spanblok - gietijzer

UCT (asborging d.m.v. borgschroeven)

d 50.8 - 61.91 mm



Asdiam. (mm)	Asdiam. (inch)	Afmetingen (mm)															Type Nr.	Huis Nr.	Toegepast lager		(Refer.) Blok Gewicht (kg)	
		A	A ₁	A ₂	H	H ₁	H ₂	L	L ₁	L ₂	L ₃	N	N ₁	N ₂	B	S			Nr.	Draaggetallen (kN) C _r C _{0r}		
50.80	2																UCT211-32		UC211-32			
52.39	2.1/16																UCT211-33		UC211-33			
53.98	2.1/8	64	22	38	146	130	102	171	106	19	95	35	25	64	55.6	22.2	UCT211-34	T211	UC211-34	43.4	29.4	4.00
55																	UCT211		UC211			
55.56	2.3/16																UCT211-35		UC211-35			
55																	UCTX11		UCX11			
55.56	2.3/16	64	22	44	146	130	102	194	119	19	102	35	32	64	65.1	25.4	UCTX11-35	TX11	UCX11-35	52.4	36.2	5.30
57.15	2.1/4																UCTX11-36		UCX11-36			
50.80	2																UCT311-32		UC311-32			
53.98	2.1/8	66	22	44	163	150	105	207	127	21	115	39	29	66	66	25	UCT311-34	T311	UC311-34	71.6	45.0	6.10
55																	UCT311		UC311			
55.56	2.3/16																UCT311-35		UC311-35			
57.15	2.1/4																UCT212-36		UC212-36			
58.74	2.5/16																UCT212-37		UC212-37			
60		64	22	42	146	130	102	194	119	19	102	35	32	64	65.1	25.4	UCT212	T212	UC212	52.4	36.2	4.90
60.33	2.3/8																UCT212-38		UC212-38			
61.91	2.7/16																UCT212-39		UC212-39			
60																	UCTX12		UCX12			
60.33	2.3/8	70	26	48	167	151	111	224	137	21	121	41	32	70	65.1	25.4	UCTX12-38	TX12	UCX12-38	57.2	40.1	7.40
61.91	2.7/16																UCTX12-39		UCX12-39			
57.15	2.1/4																UCT312-36		UC312-36			
60		71	22	46	178	160	113	220	135	23	123	41	31	71	71	26	UCT312	T312	UC312	81.9	52.2	7.60
60.33	2.3/8																UCT312-38		UC312-38			
61.91	2.7/16																UCT312-39		UC312-39			

Opmerkingen 1) Toegepaste smeernippels

1/4-28UNF 201 - 210, X05 - X09, 305 - 308

PT 1/8 211 - 218, X10 - X20, 309 - 328

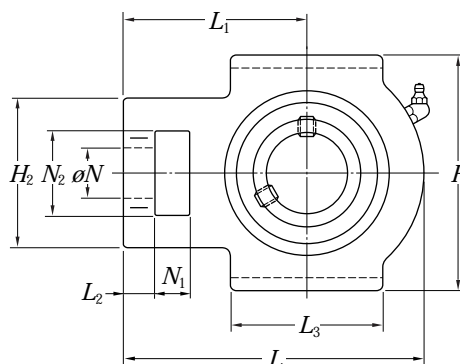
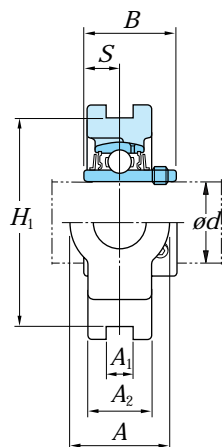
2) Lagers en blokken met dubbele- of drievoudige afdichting hebben het achtervoegsel L2 resp. L3.

LAGERBLOKKEN

Spanblok - gietijzer

UCT (asborging d.m.v. borgschroeven)

d 63.5 - 70 mm



Asdiam. (mm)	Asdiam. (inch)	Afmetingen (mm)															Type Nr.	Huis Nr.	Toegepast lager		(Refer.) Blok Gewicht (kg)
		A	A ₁	A ₂	H	H ₁	H ₂	L	L ₁	L ₂	L ₃	N	N ₁	N ₂	B	S			Nr.	Draaggetallen (kN) C _r C _{0r}	
63.50 65	2.1/2	70	26	44	167	151	111	224	137	21	121	41	32	70	65.1	25.4	UCT213-40 UCT213	T213	UC213-40 UC213	57.2 40.1	6.90
60	2.7/16	70	26	48	167	151	111	224	137	21	121	41	32	70	74.6	30.2	UCTX13-1d	TX13	UCX13-1d	62.2 44.1	7.60
61.91																	UCTX13-39		UCX13-39		
63.50 65																	UCTX13-40 UCTX13		UCX13-40 UCX13		
63.50 65	2.1/2	80	26	50	190	170	116	238	146	25	134	43	32	70	75	30	UCT313-40 UCT313	T313	UC313-40 UC313	92.7 59.9	9.30
68.26 69.85 70	2.11/16 2.3/4	70	26	46	167	151	111	224	137	21	121	41	32	70	74.6	30.2	UCT214-43 UCT214-44 UCT214	T214	UC214-43 UC214-44 UC214	62.2 44.1	7.00
65	2.11/16	70	26	48	167	151	111	232	140	21	121	41	32	70	77.8	33.3	UCTX14-1d	TX14	UCX14-1d	67.4 48.3	7.90
68.26																	UCTX14-43		UCX14-43		
69.85 70																	UCTX14-44 UCTX14		UCX14-44 UCX14		
69.85 70	2.3/4	90	26	52	202	180	130	252	155	25	140	46	36	85	78	33	UCT314-44 UCT314	T314	UC314-44 UC314	104.0 68.2	11.1
73.03 74.61 75 76.2	2.7/8 2.15/16 3	70	26	48	167	151	111	232	140	21	121	41	32	70	77.8	33.3	UCT215-46 UCT215-47 UCT215 UCT215-48	T215	UC215-46 UC215-47 UC215 UC215-48	67.4 48.3	7.30
68.26 75 70	2.15/16 3	70	28	48	184	165	111	235	140	21	121	41	32	70	82.6	33.3	UCTX15-47 UCTX15 UCTX15-48	TX15	UCX15-47 UCX15 UCX15-48	67.4 53.0	8.70

Opmerkingen 1) Toegepaste smeernippels

1/4-28UNF 201 - 210, X05 - X09, 305 - 308

PT 1/8 211 - 218, X10 - X20, 309 - 328

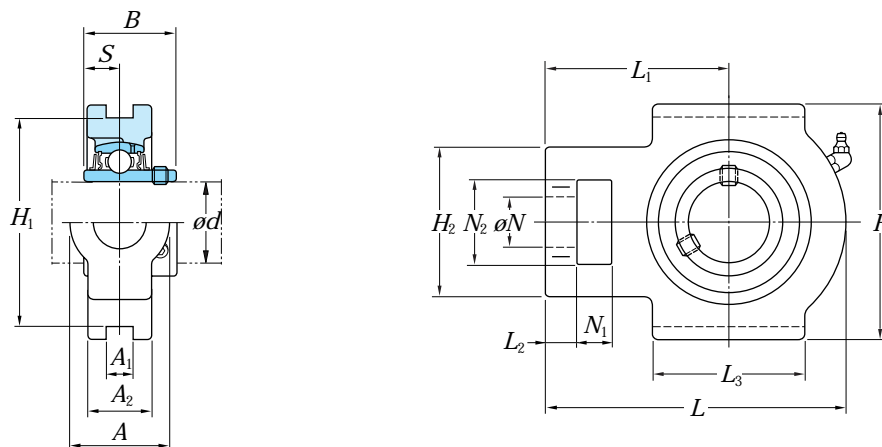
2) Lagers en blokken met dubbele- of drievoudige afdichting hebben het achtervoegsel L2 resp. L3.

LAGERBLOKKEN

Spanblok - gietijzer

UCT (asborging d.m.v. borgschroeven)

d 75 - 101.6 mm



Asdiam. (mm)	Asdiam. (inch)	Afmetingen (mm)															Type Nr.	Huis Nr.	Toegepast lager		(Refer.) Blok Gewicht (kg)
		A	A ₁	A ₂	H	H ₁	H ₂	L	L ₁	L ₂	L ₃	N	N ₁	N ₂	B	S			Nr.	Draaggetallen (kN) C _r C _{0r}	
75	3	90	26	55	216	192	132	262	160	25	150	46	36	85	82	32	UCT315 UCT315-48	T315	UC315 UC315-48	113.0 77.2	13.0
76.2		70	26	51	184	165	111	235	140	21	121	41	32	70	82.6	33.3	UCT216	T216	UC216	72.7 53.0	8.2
80	3.3/16 3.1/4	73	28	54	198	173	124	260	162	28	157	48	38	73	85.7	34.1	UCTX16 UCTX16-51 UCTX16-52	TX16	UCX16 UCX16-51 UCX16.52	84.0 61.9	11.7
80.96		102	30	60	230	204	150	282	174	28	160	53	42	98	86	34	UCT316-50 UCT316	T316	UC316-50 UC316	123.0 86.7	16.2
82.55		73	30	54	198	173	124	260	162	29	157	48	38	73	85.7	34.1	UCT217-52 UCT217	T217	UC217-52 UC217	84.0 61.9	11.0
79.38	3.1/8	73	28	54	198	173	124	260	162	28	157	48	38	73	96	39.7	UCTX17 UCTX17-55 UCTX17-56 UCTX17-1d	TX17	UCX17 UCX17-55 UCX17-56 UCX17-1d	96.1 71.5	11.7
80		102	32	64	240	214	152	298	183	30	170	53	42	98	96	40	UCT317-52 UCT317	T317	UC317-52 UC317	133.0 96.8	19.0
82.55	3.1/4	110	32	66	255	228	160	312	192	30	175	57	46	106	96	40	UCT318-56 UCT318	T318	UC318-56 UC318	143.0 107.0	21.6
85		110	35	72	270	240	165	322	197	31	180	57	46	106	103	41	UCT319 UCT319-60	T319	UC319 UC319-60	153.0 119.0	24.9
88.90	3.1/2	120	35	75	290	260	175	345	210	32	200	59	48	115	108	42	UCT320 UCT320-64	T320	UC320 UC320-64	173.0 141.0	30.7
90		110	32	66	255	228	160	312	192	30	175	57	46	106	96	40	UCT318-56 UCT318	T318	UC318-56 UC318	143.0 107.0	21.6

Opmerkingen 1) Toegepaste smeernippels

1/4-28UNF 201 - 210, X05 - X09, 305 - 308

PT 1/8 211 - 218, X10 - X20, 309 - 328

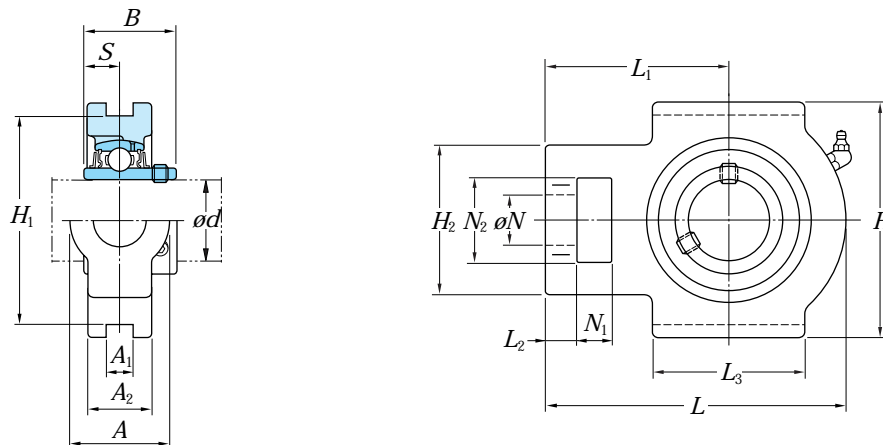
2) Lagers en blokken met dubbele- of drievoudige afdichting hebben het achtervoegsel L2 resp. L3.

LAGERBLOKKEN

Spanblok - gietijzer

UCT (asborging d.m.v. borgschroeven)

d 105 - 140 mm



Asdiam. (mm)	Asdiam. (inch)	Afmetingen (mm)															Type Nr.	Huis Nr.	Toegepast lager		(Refer.) Blok Gewicht (kg)
		A	A ₁	A ₂	H	H ₁	H ₂	L	L ₁	L ₂	L ₃	N	N ₁	N ₂	B	S			Nr.	Draaggetallen (kN) C _r C _{0r}	
105		120	35	75	290	260	175	345	210	32	200	59	48	115	112	44	UCT321	T321	UC321	184.0 153.0	36.7
110 112.71	4.7/16	130	38	80	320	285	185	385	235	38	215	65	52	125	117	46	UCT322 UCT322-71	T322	UC322 UC322-71	205.0 180.0	39.7
120 125.41	4.15/16	140	45	90	355	320	210	432	267	42	230	70	60	140	126	51	UCT324 UCT324-79	T324	UC324 UC324-79	207.0 185.0	54.4
130 130.18	5.1/8	150	50	100	385	350	220	465	285	45	240	75	65	150	135	54	UCT326 UCT326-82	T326	UC326 UC326-82	229.0 214.0	69.3
139.70 140	5.1/2	155	50	100	415	380	230	515	315	50	255	80	70	160	145	59	UCT328-88 UCT328	T328	UC328-88 UC328	253.0 246.0	85.1

Opmerkingen 1) Toegepaste smeernippels

1/4-28UNF 201 - 210, X05 - X09, 305 - 308

PT 1/8 211 - 218, X10 - X20, 309 - 328

2) Lagers en blokken met dubbele- of drievoudige afdichting hebben het achtervoegsel L2 resp. L3.