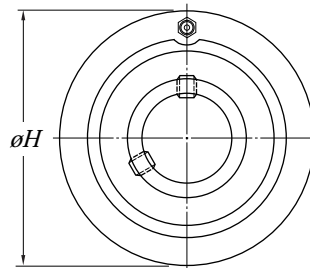
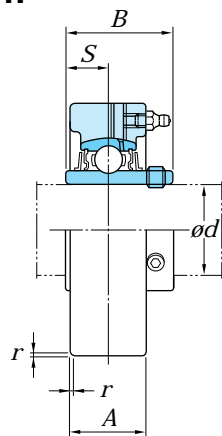


KOYO

LAGERBLOKKEN



LAGERBLOKKEN
Cartridge blok - gietijzer
UCC (asborging d.m.v. borgschroeven)
***d* 12 - 30.16 mm**



Asdiam. (mm) <i>d</i>	Asdiam. (inch) <i>d</i>	Afmetingen (mm)					Type Nr.	Huis Nr.	Toegepast lager		(Refer.) Blok Gewicht (kg)
		<i>H</i>	<i>A</i>	<i>r</i>	<i>B</i>	<i>S</i>			Draaggetallen (kN) <i>C_r</i> <i>C_{0r}</i>		
12											
12,70	1/2						UCC201		UC201		
14,28	9/16						UCC201-08		UC201-08		0.52
15							UCC202-09		UC202-09		
15,87	5/8	72	20	1.5	31	12.7	UCC202		UC202		
17							UCC202-10	C204	UC202-10	12.8 6.65	0.50
17,46	11/16						UCC203		UC203		
19,05	3/4						UCC203-11		UC203-11		0.49
20							UCC204-12		UC204-12		
20,64	13/16						UCC204		UC204		0.47
22,23	7/8						UCC205-13		UC205-13		
23,81	15/16	80	22	1.5	34.1	14.3	UCC205-14		UC205-14		
25							UCC205-15	C205	UC205-15	14.0 7.85	0.64
25,40	1						UCC205		UC205		
25,40	1						UCC205-16		UC205-16		
23,81	15/16						UCCX05-15		UCX05-15		
25		90	27	1.5	38.1	15.9	UCCX05	CX05	UCX05	19.5 11.3	1.00
25,40	1						UCCX05-16		UCX05-16		
22,23	7/8						UCC305-14		UC305-14		
23,81	15/16	90	26	2.0	38.0	15.0	UCC305-15		UC305-15		
25							UCC305	C305	UC305	20.6 11.3	1.50
25,40	1						UCC305-16		UC305-16		
26,98	1.1/16						UCC206-17		UC206-17		
28,58	1.1/18	85	27	1.5	38.1	15.9	UCC206-18		UC206-18		
30							UCC206	C206	UC206	19.5 11.3	0.81
30,16	1.3/16						UCC206-19		UC206-19		

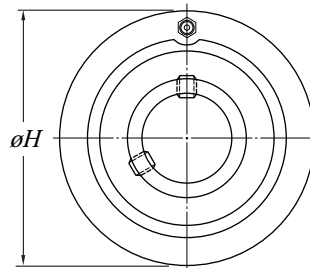
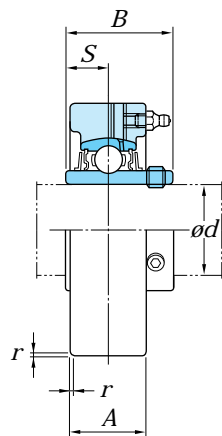
Opmerkingen 1) Toegepaste smeernippels

1/4-28UNF 201 - 213, X05 - X12, 305 - 308

PT 1/8 309 - 328

2) Lagere en blokken met dubbele- of drievoudige afdichting hebben het achtervoegsel L2 resp. L3.

LAGERBLOKKEN
Cartridge blok - gietijzer
UCC (asborging d.m.v. borgschroeven)
d 30 - 40 mm



Asdiam. (mm) <i>d</i>	Asdiam. (inch) <i>d</i>	Afmetingen (mm)					Type Nr.	Huis Nr.	Toegepast lager Draaggetallen (kN)		(Refer.) Blok Gewicht (kg)
		<i>H</i>	<i>A</i>	<i>r</i>	<i>B</i>	<i>S</i>			<i>C_r</i>	<i>C_{0r}</i>	
30						UCCX06		UCX06			
30.16	1.3/16	100	30	2.0	42.9	UCCX06-19	CX06	UCX06-19	25.7	15.4	1.30
31.75	1.1/4					UCCX06-20		UCX06-20			
28.58	1.1/8					UCC306-18		UC306-18			
30		100	28	2.0	43.0	UCC306	C306	UC306	26.7	15.0	1.70
30.16	1.3/16					UCC306-19		UC306-19			
31.75	1.1/4					UCC207-20		UC207-20			
33.34	1.5/16					UCC207-21		UC207-21			
34.93	1.3/8	90	28	2.0	42.9	UCC207-22	C207	UC207-22	25.7	15.4	0.93
35						UCC207		UC207			
36.51	1.7/16					UCC207-23		UC207-23			
35						UCCX07		UCX07			
36.51	1.7/16	110	34	2.0	49.2	UCCX07-23	CX07	UCX07-23	29.1	17.8	1.70
38.10	1.1/2					UCCX07-24		UCX07-24			
31.75	1.1/4					UCC307-20		UC307-20			
33.34	1.5/16					UCC307-21		UC207-21			
34.93	1.3/8	110	32	3.0	48.0	UCC307-22	C307	UC307-22	33.4	19.3	2.20
35						UCC307		UC307			
36.51	1.7/16					UCC307-23		UC207-23			
38.10	1.1/2					UCC208-24		UC208-24			
39.69	1.9/16	100	30	2.0	49.2	UCC208-25	C208	UC208-25	29.1	17.8	1.20
40						UCC208		UC208			
38.10	1.1/2					UCCX08-24		UCX08-24			
40		120	38	2.0	49.2	UCCX08	CX08	UCX08	32.7	20.3	2.10

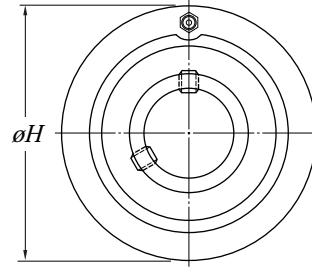
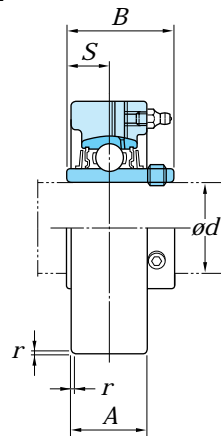
Opmerkingen 1) Toegepaste smeernippels

1/4-28UNF 201 - 213, X05 - X12, 305 - 308

PT 1/8 309 - 328

2) Lagere en blokken met dubbele- of drievoudige afdichting hebben het achtervoegsel L2 resp. L3.

LAGERBLOKKEN
Cartridge blok - gietijzer
UCC (asborging d.m.v. borgschroeven)
d 38.1 - 50 mm



Asdiam. (mm) <i>d</i>	Asdiam. (inch) <i>d</i>	Afmetingen (mm)					Type Nr.	Huis Nr.	Toegepast lager Draaggetallen (kN)		(Refer.) Blok Gewicht (kg)																
		<i>H</i>	<i>A</i>	<i>r</i>	<i>B</i>	<i>S</i>			<i>C_r</i>	<i>C_{0r}</i>																	
38.10 39.69 40	1.1/2 1.9/16	120	34	3.0	52.0	19.0	UCC308-24 UCC308-25 UCC308	C308	UC308-24 UC308-25 UC308	40.7 24.0	2.20																
41.28 42.86 44.45 45	1.5/8 1.11/16 1.3/4						110		31			2.0	49.2	19.0	UCC209-26 UCC209-27 UCC209-28 UCC209	C209	UC209-26 UC209-27 UC209-28 UC209	32.7 20.3	1.50								
40 42.86 44.45 45	1.11/16 1.3/4														120		38			2.0	51.6	19.0	UCCX09/1d UCCX09-27 UCCX09-28 UCCX09	CX09	UCX09/1d UCX09-27 UCX09-28 UCX09	35.1 23.3	2.20
41.28 42.86 44.45 45	1.5/8 1.11/16 1.3/4	130	38	3.0	57.0	22.0		UCC309-26 UCC309-27 UCC309-28 UCC309		C309	UC309-26 UC309-27 UC309-28 UC309												48.9 29.5		2.80		
46.04 47.63 49.21 50	1.13/16 1.7/8 1.15/16							120			33																
42.86 50 50.80	1.15/16 2						130		40			2.5	55.6	22.2	UCCX10-31 UCCX10 UCCX10-32	CX10	UCX10-31 UCX10 UCX10-32	43.4 29.4	2.80								
47.63 49.21 50	1.7/8 1.15/16														140		40			3.0	61.0	22.0		UCC310-30 UCC310-31 UCC310		C310	UC310-30 UC310-31 UC310

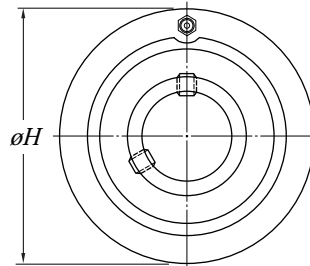
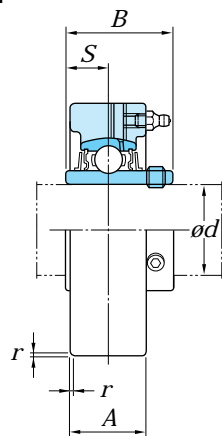
Opmerkingen 1) Toegepaste smeernippels

1/4-28UNF 201 - 213, X05 - X12, 305 - 308

PT 1/8 309 - 328

2) Lagere en blokken met dubbele- of drievoudige afdichting hebben het achtervoegsel L2 resp. L3.

LAGERBLOKKEN
Cartridge blok - gietijzer
UCC (asborging d.m.v. borgschroeven)
d 50.8 - 65 mm



Asdiam. (mm) <i>d</i>	Asdiam. (inch) <i>d</i>	Afmetingen (mm)					Type Nr.	Huis Nr.	Toegepast lager Draaggetallen (kN)		(Refer.) Blok Gewicht (kg)
		<i>H</i>	<i>A</i>	<i>r</i>	<i>B</i>	<i>S</i>			<i>C_r</i>	<i>C_{0r}</i>	
50.80	2						UCC211-32		UC211-32		
52.39	2.1/16						UCC211-33		UC211-33		
53.98	2.1/8	125	35	2.5	55.6	22.2	UCC211-34	C211	UC211-34	43.4	29.4
55							UCC211		UC211		
55.56	2.3/16						UCC211-35		UC211-35		
55							UCCX11		UCX11		
55.56	2.3/16	150	42	2.5	65.1	25.4	UCCX11-35	CX11	UCX11-35	52.4	36.2
57.15	2.1/4						UCCX11-36		UCX11-36		
50.80	2						UCC311-32		UC311-32		
53.98	2.1/8	150	44	3.0	66.0	25.0	UCC311-34	C311	UC311-34	71.6	45.0
55							UCC311		UC311		
55.56	2.3/16						UCC311-35		UC311-35		
57.15	2.1/4						UCC212-36		UC212-36		
58.74	2.5/16						UCC212-37		UC212-37		
60		130	38	2.5	65.1	25.4	UCC212	C212	UC212	52.4	36.2
60.33	2.3/8						UCC212-38		UC212-38		
61.91	2.7/16						UCC212-39		UC212-39		
60		160	44	2.5	65.1	25.4	UCCX12		UCX12		4.60
57.15	2.1/4						UCC312-36		UC312-36		
60		160	46	3.0	71.0	26.0	UCC312	C312	UC312	81.9	52.2
60.33	2.3/8						UCC312-38		UC312-38		
61.91	2.7/16						UCC312-39		UC312-39		
63.50	2.1/2	140	40	2.5	65.1	25.4	UCC213-40	C213	UC213-40	57.2	40.1
65							UCC213		UC213		3.00

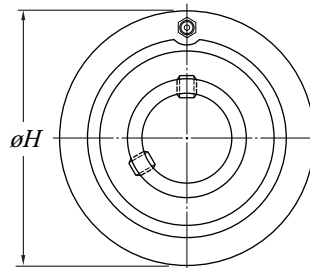
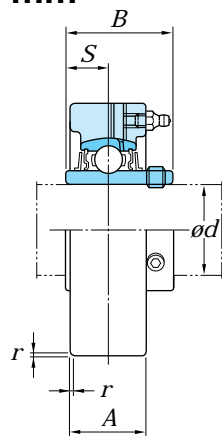
Opmerkingen 1) Toegepaste smeernippels

1/4-28UNF 201 - 213, X05 - X12, 305 - 308

PT 1/8 309 - 328

2) Lagere en blokken met dubbele- of drievoudige afdichting hebben het achtervoegsel L2 resp. L3.

LAGERBLOKKEN
Cartridge blok - gietijzer
UCC (asborging d.m.v. borgschroeven)
 d 63.5 - 125.41 mm

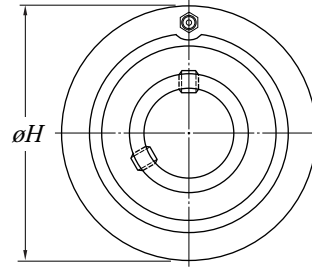
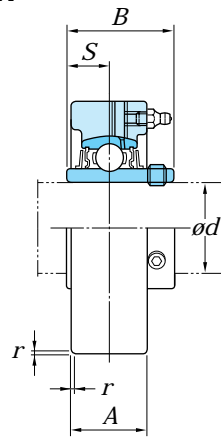


Asdiam. (mm) d	Asdiam. (inch) d	Afmetingen (mm)					Type Nr.	Huis Nr.	Toegepast lager Draaggetallen (kN)		(Refer.) Blok Gewicht (kg)
		H	A	r	B	S			C_r	C_{0r}	
63.50 65	2.1/2	170	50	3.0	75.0	30.0	UCC313-40 UCC313	C313	UC313-40 UC313	92.7 59.9	5.70
69.85 70	2.3/4	180	52	3.0	78.0	33.0	UCC314-44 UCC314	C314	UC314-44 UC314	104.0 68.2	6.70
75 76.2	3	190	55	4.0	82.0	32.0	UCC315 UCC315-48	C315	UC315 UC315-48	113.0 77.2	7.80
79.38 80	3.1/8	200	60	4.0	86.0	34.0	UCC316-50 UCC316	C316	UC316-50 UC316	123.0 86.7	9.20
82.55 85	3.1/4	215	64	4.0	96.0	40.0	UCC317-52 UCC317	C317	UC317-52 UC317	133.0 96.8	11.70
88.90 90	3.1/2	225	66	4.0	96.0	40.0	UCC318-56 UCC318	C318	UC318-56 UC318	143.0 107.0	13.10
95 95.25	3.3/4	240	72	4.0	103.0	41.0	UCC319 UCC319-60	C319	UC319 UC319-60	173.0 119.0	15.80
100 101.60	4	260	75	4.0	108.0	42.0	UCC320 UCC320-64	C320	UC320 UC320-64	173.0 141.0	19.60
105		260	75	4.0	112.0	44.0	UCC321	C321	UC321	184.0 153.0	27.00
110 112.71	4.7/16	300	80	5.0	117.0	46.0	UCC322 UCC322-71	C322	UC322 UC322-71	205.0 180.0	29.20
120 125.41	4.15/16	320	90	5.0	126.0	51.0	UCC324 UCC324-79	C324	UC324 UC324-79	207.0 185.0	35.90

Opmerkingen 1) Toegepaste smeernippels
 1/4-28UNF 201 - 213, X05 - X12, 305 - 308
 PT 1/8 309 - 328

2) Lagers en blokken met dubbele- of drievoudige afdichting hebben het achtervoegsel L2 resp. L3.

LAGERBLOKKEN
Cartridge blok - gietijzer
UCC (asborging d.m.v. borgschroeven)
d 130 - 140 mm



Asdiam. (mm)	Asdiam. (inch)	Afmetingen (mm)					Type Nr.	Huis Nr.	Toegepast lager		(Refer.) Blok Gewicht (kg)
		H	A	r	B	S			Nr.	Draaggetallen (kN) C _r C _{0r}	
130							UCC326 UCC326-82	C326	UC326 UC326-82	229.0 214.0	43.00
130.18	5.1/8	340	100	6.0	135.0	54.0					
139.70	5.1/2						UCC328-88 UCC328	C328	UC328-88 UC328	253.0 246.0	52.90
140		360	100	6.0	145.0	59.0					

Opmerkingen 1) Toegepaste smeernippels

1/4-28UNF 201 - 213, X05 - X12, 305 - 308

PT 1/8 309 - 328

2) Lagers en blokken met dubbele- of drievoudige afdichting hebben het achtervoegsel L2 resp. L3.